

12

**EUROPEAN PATENT APPLICATION**

21 Application number: 84300322.9

51 Int. Cl.<sup>3</sup>: **C 07 G 7/00**  
**// A61K35/32, A61K37/02**

22 Date of filing: 19.01.84

30 Priority: 12.04.83 US 484286

71 Applicant: **COLLAGEN CORPORATION, 2500 Faber Place, Palo Alto, California 94303 (US)**

43 Date of publication of application: 17.10.84  
Bulletin 84/42

72 Inventor: **Seyedin, Saeld, 9 Sutter Creek Lane, Mountain View California 94043 (US)**  
Inventor: **Thomas, Thomas, 249 Santa Rita, Palo Alto California 94301 (US)**

84 Designated Contracting States: **AT BE CH DE FR GB IT LI LU NL SE**

74 Representative: **Harrison, David Christopher et al, MEWBURN ELLIS & CO 2/3 Cursitor Street, London EC4A 1BQ (GB)**

54 **Partially purified osteogenic factor and process for preparing same from demineralized bone or an osteosarcoma.**

57 **A process for partially purifying an osteogenic factor from demineralized bone particles or osteosarcomas in which nonfibrous proteins are extracted from the demineralized bone or osteosarcomas with a dissociative extractant for nonfibrous proteins, such as urea or guanidine hydrochloride, the extracted nonfibrous proteins are fractionated by anion exchange chromatography using DEAE cellulose at pH 7, the fraction not adsorbed by the DEAE cellulose is further fractionated by cation exchange chromatography using CM cellulose at pH 4.8, the fraction adsorbed by the CM cellulose is eluted therefrom and the partially purified osteogenic factor is recovered from the eluate as a  $\lesssim 30\ 000$  dalton protein isolate.**

**EP 0 121 976 A2**

**BEST AVAILABLE COPY**

PARTIALLY PURIFIED OSTEOGENIC FACTOR  
AND PROCESS FOR PREPARING SAME FROM  
DEMINERALIZED BONE OR AN OSTEOSARCOMA

5

The invention is in the fields of protein chemistry and osteoplasty. More particularly the invention relates to a partially purified extract from demineralized bone or an osteosarcoma that exhibits  
10 cartilage and bone induction activity.

Prior efforts to isolate and characterize the chemical or chemicals present in bone or osteosarcomas that induce osteogenesis have been reported. US Pat No.  
15 4,294,753 describes the partial isolation of a bone inducing agent, called "bone morphogenetic protein," from demineralized bone. Bone morphogenetic protein was not fully characterized and was obtained as a crude bone or dentin tissue extract. The process by which the crude  
20 protein was obtained involved: demineralizing bone tissue; extracting the factor from the demineralized bone with an aqueous solution of a neutral salt and either urea or guanidine; and removing the urea or guanidine from the extract to precipitate the crude protein.

25 Ion exchange purification of crude bone morphogenetic protein is reported by Urist, M. R., et al, Clin Orthopaedics and Related Research (1982) 162:219-232. The crude protein was redissolved and reprecipitated in 6 M and 1 M aqueous urea, respectively.  
30 The final precipitate was taken up in 6 M urea and chromatographed on CM-cellulose (a cationic exchanger) at

pH 4.8. The unadsorbed fraction was further chromatographed on DEAE-cellulose (an anion exchanger) at pH 7.2. Bioassay of the adsorbed and unadsorbed fractions from both separations showed that only the 5 unadsorbed fractions from each separation exhibited osteoinductive activity. High molecular weight proteins were separated from the DEAE unadsorbed fraction by gel filtration.

A principal object of the present invention is 10 to provide a partially purified osteogenic factor that is either different from or purer than the factor reported by Urist, et al.

The osteogenic factor of the invention is 15 present in vertebrate bone and osteosarcomas and has the following characteristics:

- (a) it is a nonfibrous protein;
- (b) it is unadsorbed by diethylaminoethyl cellulose anion exchanger at a pH of about 7.0;
- 20 (c) it is adsorbed by carboxymethyl cellulose cation exchanger at a pH of about 4.8; and
- (d) it has a molecular weight below about 30,000 daltons.

The process for partially purifying this 25 osteogenic factor from particulate demineralized bone or osteosarcomas comprises extracting nonfibrous proteins from demineralized bone or an osteosarcoma with a liquid dissociative nonfibrous protein extractant and purifying the factor from the extract by ion exchange 30 chromatography and is characterized in that:

- (a) the extract is first contacted with an anion exchanger at a pH of about 6.8 to about 7.2;

(b) the unadsorbed fraction from the anion exchanger is contacted with a cation exchanger at a pH of about 4.5 to about 5.2;

(c) the adsorbed fraction from the cation exchanger is eluted; and

(d) materials having a molecular weight below about 30,000 daltons are isolated from the eluate.

In the drawings:

10 Figure 1 is a graph of the optical densities of eluate fractions from the preparative ion exchange of the example; infra; and

Figure 2 is a graph of the optical densities of the gel filtration fractions of the example, infra.

15

The bone or osteosarcoma that is used in the invention may be collected from a variety of mammalian sources. Homogeneous and xenogeneous sources may be used. Osteosarcomas may be induced in laboratory animals.

20 Bovine and porcine bone, preferably long bone, will normally be used because of its availability. The surface of the bone is first cleaned by physically removing periosteum by scraping or brushing. The bone is then fragmented or pulverized into small pieces and the

25 fragments are washed with a very mild aqueous acid, e.g., 0.01 N HCl, with agitation to remove any water soluble materials remaining on the fragments. The washing is preferably carried out at reduced temperatures, usually about 0°C to 18°C, preferably about 5°C, with frequent

30 changing of the wash medium. The fragments are then

dried, and defatted by extraction with one or more lipophilic solvents, such as ethanol ethylacetate and diethylether, to remove lipids.

The principal mineral component of bone is calcium phosphate. The term "calcium phosphate" as used herein is intended to encompass the numerous calcium-phosphorus complexes and compounds present in bone such as the various polycalcium phosphates, hydroxyapatite, chlorapatite, and the like. Calcium phosphate usually constitutes about 80% of the mineral content of bone. Other mineral components of bone include calcium carbonate, calcium fluoride, calcium chloride, and magnesium phosphate. These minerals are normally soluble in dilute mineral and organic acids and such acids may be used to demineralize bone without digesting the protein components of the bone. The concentration of the acid used to demineralize the bone will usually be between 0.1 M to 1.0 M. Hydrochloric acid at a concentration of 0.5 M is preferred. The bone will normally be contacted with the acid for one hour to several days at temperatures ranging from about 0°C to about 25°C. Agitation will facilitate extraction of the minerals from the bone. After the extraction is complete the bone is separated from the acid such as by sedimentation, filtration or other conventional solid-liquid separation techniques and the resulting demineralized, non-digested bone is washed with water to remove adsorbed acid.

Following demineralization noncollagenous proteins (including proteoglycans) are extracted from the demineralized bone by contacting the bone with an aqueous liquid extractant that dissociates ionic bonds and solubilizes the noncollagenous proteins in the bone. This extractant is sometimes referred to herein as a "dissociative nonfibrous protein extractant." The extraction

is done under conditions that inhibit digestion or denaturation of the extracted proteins. Examples of dissociative extractants that may be used are guanidine hydrochloride (at least about 4 M), urea (8 M) plus salt 5 (1 M), and sodium dodecyl sulfate (at least about 1% by volume). A preferred extractant is 4 M guanidine hydrochloride, pH 6.8. The extractants will usually be mixed with the bone with mild agitation at bone extractant ratios (v/w) of at least about 10:1, usually 10 about 15:1 to 20:1. The extraction is preferably carried out at reduced temperatures in the presence of a protein inhibitor to reduce the likelihood of digestion or denaturation of the extracted protein. The temperature will usually be in the range of 0°C and 20°C, 15 preferably 0°C and 5°C. Examples of protease inhibitors that may be included in the extraction medium are phenylmethylsulfonyl fluoride, N-ethyl maleimide, benzamidine, and 6-aminohexanoic acid. The pH of the extraction medium will depend upon the particular 20 extractant that is used. The bone will usually be contacted with the extraction medium for about 16 to 24 hr. After the extraction is complete the undissolved bone is separated from the extract by conventional solid-liquid separation techniques such as centrifugation or 25 filtration. Further work up of the extract by repeated precipitation or dialysis may be carried out if desired.

The next step in the purification of the osteogenic factor is preparative ion exchange chromatography. The chromatography is carried out in two 30 substeps: (1) fractionation on an anion exchanger followed by (2) fractionation on a cation exchanger. In the anion exchange fractionation the noncollagenous protein is contacted with an anion exchanger at a pH of about 6.8 to 7.2, preferably about 7.0. Cellulosic ion

exchangers and ion exchange gels derived from cross-linked dextran or polyacrylamide are examples of anion exchangers that may be used. Cellulosic anion exchangers are preferred. Diethylaminoethyl is a preferred functional anion exchange group. The anion exchange fractionation may be carried out in a column or batch operation. The noncollagenous proteins are in an aqueous solution containing one of the above-described extractants (to keep the proteins in solution) and preferably also an effective amount of a protease inhibitor when contacted with equilibrated exchanger. The solution is buffered to the desired pH. The contact time should be sufficient to allow the exchange to reach equilibrium. In a batch operation the unadsorbed fraction of the extract may be separated from the anion exchange material by centrifuging or filtering. In either instance, the unadsorbed fraction of the extract contains the desired osteogenic factor and is collected or isolated and further fractionated on the cationic exchanger.

The cation exchange fractionation is effected by contacting the unadsorbed fraction from the anion exchange substep with a cation exchanger at a pH of about 4.5 to about 5.2, preferably about 4.8. Examples of cation exchangers that may be used are the available cellulose cation exchangers and cation exchange gels derived from polyacrylamide and cross-linked dextran. Cellulosic cation exchangers are preferred. Carboxymethyl is a preferred cation exchange functional group. Before being contacted with the cation exchanger the buffers in the unadsorbed fraction of the anion exchange step are removed from the fraction such as by dialysis. The proteins in the unadsorbed fraction are redissolved, if necessary, and the solution is buffered

to the desired pH for the cation exchange. The solution is then contacted with equilibrated cation exchanger again for a time sufficient to let the exchange reach equilibrium. In the cation exchange fractionation, the 5 fraction of the solution that is adsorbed by the cation exchanger contains the desired osteogenic factor and must be recovered from the cation exchanger. When the exchange is carried out batchwise the exchanger is first separated from the unadsorbed fraction of the solution. 10 The exchanger is then washed with starting buffer to remove any residual unadsorbed material.

Following washing of the cation exchanger noncollagenous protein adsorbed thereon is recovered by elution with an elutant of appropriate pH or ionic 15 strength. Stepwise or gradient elution may be used to obtain differential elution of the adsorbed proteins if desired. When carboxymethyl cellulose is used as a cation exchanger in the process the osteogenic factor may be eluted from the exchanger using a buffer having an 20 ionic strength in the range of about 10 to about 400 mM.

The final step in the purification is fractionating the eluate by molecular weight to recover the  $\approx$  30K dalton fraction of the eluate. This fractionation may be done by gel filtration or other 25 conventional separation techniques. Partially purified factor may be recovered from the  $\approx$  30K dalton fraction of the eluate by conventional procedures such as dialysis and lyophilization. The partially purified material may be implanted in mammals with or without a carrier to 30 induce bone formation at the implant site.

The following example further illustrates the invention process and the partially purified osteogenic factor produced thereby. This example is not intended to limit the invention in any manner.



Preparation of Demineralized Bone

Bovine metatarsal bone obtained fresh from a slaughterhouse and frozen at  $-70^{\circ}\text{C}$  was used. The bone was cleaned of periosteum, broken into fragments smaller than 1 cm in diameter and pulverized in a large mill. The pulverized bone was washed overnight in 0.01 N HCl at  $4^{\circ}\text{C}$ . It was then defatted by 3 washes of approximately 20 min duration with 3 volumes of ethanol and the same with diethylether. The defatted bone powder was demineralized in 0.5 N HCl at  $4^{\circ}\text{C}$ . The acid was removed and the demineralized bone powder was washed twice with 10 volumes of water.

Extraction of Noncollagenous Proteins

Demineralized bone powder was extracted with 10 volumes of 4 M guanidine-HCl, 15 mM ethylenediaminetetraacetic acid (EDTA) pH 6.5, 1 mM phenylmethylsulfonyl fluoride (PMSF), and 10 mM N-ethylmaleimide (NEM) for 16 hr at  $4^{\circ}\text{C}$ . The suspension was centrifuged at 10,000 rpm for 30 min. The pellet was washed with another five volumes of 4 M guanidine solution and centrifuged as above. Soluble fractions were combined and concentrated at least five volumes by ultrafiltration using an Amicon ultrafiltration (10K) unit. The concentrate was dialyzed employing the same unit against a solution containing 6 M urea, 1 mM PMSF, 1 mM NEM, 20 mM Na phosphate (pH 7.0) and 50 mM NaCl or dialyzed against water and lyophilized.

Preparative Ion Exchange

An anion exchanger, diethylaminoethyl (DEAE)-cellulose (Whatman), equilibrated with 6 M urea, 1 mM PMSF, 1 mM NEM, 20 mM Na phosphate (pH 7.0), and 50 mM NaCl was used in the first step of the ion exchange

purification of the extract. The soluble extract or lyophilized extract was equilibrated or dissolved in DEAE-cellulose equilibration buffer and mixed with the exchanger and stirred gently over a period of one or two  
5 hr. The unadsorbed materials were further fractionated by cation exchange chromatography using carboxymethyl (CM)-cellulose, which had been equilibrated with a 6 M urea, 10 mM NaCl, 1 mM PMSF, 1 mM NEM, 50 mM Na acetate, pH 4.8. The unadsorbed material was mixed with the CM-  
10 cellulose and the slurry was used to pack a 50 cc column. The column was washed with 10 mM NaCl in the above buffer. Adsorbed proteins were eluted using a 50 mM to 400 mM NaCl gradient in the same buffer. Fractions were collected and then combined based on their adsorbance and  
15 electrophoretic profiles. Optical density (OD) readings at 280 nm of the fractions were made. Figure 1 is a plot of those readings. Fractions 23-32 were combined, dialyzed against water and lyophilized.

#### Gel Filtration

20 The combined fraction was then fractionated on a Sephacryl S-200 column equilibrated in 6 M urea, 10 mM NaCl, 10 mM EDTA, pH 7 (alternatively, 4 M guanidine, 0.02% NaN<sub>3</sub>, 10 mM EDTA, pH 6.8 may be used). OD readings at 280 nm of the fractions were made. Figure 2 is a plot  
25 of those readings. Fractions 45-53 were combined and constitute the S-200 low molecular weight (30K dalton) protein fraction. This fraction was dialyzed against 0.05 N NH<sub>3</sub>HCO<sub>3</sub> and lyophilized.

The osteoinductive activities of various  
30 fractions reported in the above example were assayed by their ability to cause rat muscle fibroblasts in agarose to synthesize type II collagen and cartilage

proteoglycans. The materials and methods used in the assay were as follows:

Muscle tissue was aseptically dissected from the upper limbs of 19 day old Sprague Dawley rat fetuses. 5 The tissues were minced and cultured in Eagle's minimum essential medium (MEM) with 10% fetal calf serum and 50 U penicillin, 50 g streptomycin/ml media. Cellular outgrowth usually reached confluency within one week. Cells were trypsinized at confluency, split 1:2 and used 10 for experimentaion within the first three passages.

Cells were embedded in agarose gels by the method described in Cell (1982) 30:215-224. Briefly, 1.0 ml of 1% high melting agarose (Bio-Rad, #162-0100) was added to each 35 mm well and allowed to gel on a level 15 surface at room temperature. Low melting agarose, 2%, (Bio-Rad, #162-0017) equilibrated to 38°C was mixed with an equal volume of 2 X concentrated Ham's F-12 nutrient mixture and held at 38°C. The agarose/F-12 solution was then mixed with an equal volume of cell suspension and 20 1.5 ml was added to each well. When firm, gels were overlaid with 3.0 ml of media, cultured at 37°C in 5% CO<sub>2</sub>, 95% air and fed twice weekly. Media for cell suspension and feeding consisted of Ham's F-12 with 10% heat-inactivated fetal calf serum, 0.5% chick embryo 25 extract (optional) penicillin/streptomycin and supplemented with the test fraction. Agarose solutions were sterilized by autoclaving at 121°C for 15 min prior to use. The final cell concentration was  $3 \times 10^6$  cells/35 mm well. Cultures were done in duplicate.

30 After 14-21 days of culture, gels were fixed and stained according to the method described in J Cell Biol (1970) 45:434-438. Gels were briefly rinsed two times in phosphate buffered saline (PBS), fixed in 40% formalin, rinsed with distilled water stained with

0.5% toluidine blue in 25% acetone and washed overnight with distilled water.

After fixation, a portion of each gel was removed for histological processing. Gels were  
5 dehydrated, cleared and embedded in paraffin. Four to six  $\mu$ m sections were taken perpendicular and parallel to the surface of the gel. Sections were stained with toluidine blue or safranin O. Proteoglycan matrix deposition was determined by metachromatic staining  
10 (purple with toluidine blue, orange with safranin O).

Proteoglycans and collagen were extracted from the gels treated with extract for 3, 7, 14 days by homogenization in 2 volumes of 6 M guanidine-HCl, 0.075 M sodium acetate, 20 mM EDTA, 2 mM PMSF, 10 mM NEM, pH 5.8  
15 followed by shaking at 4°C for 18 hr. Agarose was removed by centrifugation (15K rpm, 30 min). The supernatant was then dialyzed against 10 volumes of water at 4°C containing 0.2 mM PMSF (final guanidine HCl concentration  $\sim$ 0.05 M). Samples were lyophilized and  
20 resuspended in 1/10 volume water (final guanidine HCl concentration  $\sim$ 0.5 M).

Proteoglycans and type II collagen were then measured by the enzyme-linked immunosorbent assay (ELISA) technique essentially as described by Rennard, et al,  
25 Anal Biochem (1980) 104:205-214. Antisera to cartilage proteoglycans and type II collagen were raised in rabbits using standard techniques. Both proteoglycan and type II collagen for immunization were isolated from Swarm rat chondrosarcomas. Antisera to type II collagen was  
30 affinity purified using a cyanogen bromide Sepharose column.

For ELISA, microtiter wells were coated with 200  $\mu$ l of the appropriate antigen in 20 mM carbonate buffer, pH 9.6, at 4°C overnight (100-1000 ng/well).

Wells were washed 3 times with 0.9% NaCl containing 0.05% Tween 20 surfactant to remove unbound antigen. Proteoglycans and type II collagen were measured by inhibition ELISA. Sample aliquots (10-100  $\mu$ l) were

5 incubated in PBS containing 1 mg/ml bovine serum albumin and 0.05% Tween 20 surfactant with the appropriate antisera (1:500 affinity purified type II or 1:2000 proteoglycan) for 2 hr at room temperature. Two hundred  $\mu$ l of incubation mixture was then added to

10 antigen-coated plates for 45-60 min at room temperature. After washing 3 times with PBS-Tween 20 surfactant, goat anti-rabbit IgG conjugated to horseradish peroxidase (Tago, 1:200) was then added for one hr at room temperature. Unbound second antibody was then removed

15 with PBS-Tween 20 surfactant and substrate (o-phenylenediamine, 1 mg/ml in 0.1 M citrate, pH 4.6) was added for 30-60 min. Reactions were stopped by addition of 50  $\mu$ l 2 M sulfuric acid. Spectrophotometric readings (492 nm) of the reaction media were done and compared to

20 standard curves to determine whether production of type II collagen and proteoglycan had been induced. The results of these assays (+ indicates induction, - indicates no induction) are tabulated below.

<u>Fraction</u>	<u>Type II Collagen</u>	<u>Proteoglycans</u>
25 Control	-	-
Extract	+	+
DEAE adsorbed	-	-
DEAE unadsorbed	+	+
30 CM adsorbed	+	+
CM unadsorbed	-	-
Sephacryl S-200 ( $<$ 30K dalton fraction)	+	+
Sephacryl S-200 ( $>$ 30K dalton fraction)	-	-

Claims

1. A process for partially purifying an osteogenic factor from particulate demineralized bone or an osteosarcoma comprising extracting nonfibrous proteins  
5 from the demineralized bone or osteosarcoma with a liquid dissociative nonfibrous protein extractant and separating the osteogenic factor from the extract by ion exchange chromatography characterized in that:

- (a) the extract is first contacted with an  
10 anion exchanger at a pH of about 6.8 to about 7.2;
- (b) the unadsorbed fraction from the anion exchanger is contacted with a cation exchanger at a pH of about 4.5 to about 5.2;
- (c) the adsorbed fraction from the cation  
15 exchanger is eluted; and
- d) nonfibrous protein having a molecular weight below about 30,000 daltons are isolated from the eluate.

2. The process of claim 1 further  
20 characterized in that steps (a) through (c) are each carried out in the presence of a protease inhibitor.

3. The process of claim 1 further characterized in that the anion exchanger and the cation exchanger are cellulosic ion exchangers.

25 4. The process of claim 3 further characterized in that the anion exchanger is diethylaminoethyl cellulose and the cation exchanger is carboxymethyl cellulose; step (a) is carried out at a pH of about 7.0; and step (b) is carried out at a pH of  
30 about 4.8.

5. The process of claim 1 further characterized in that step (d) is carried out by gel filtration.

6. The process of claim 2 further  
5 characterized in that the extractant is removed from the extract, the nonfibrous proteins in the extracts are dissolved in 6 mM urea for contacting with the anion exchanger, the anion exchanger is diethylaminoethyl cellulose, the pH of step (a) is about 7.0, and cation  
10 exchanger is carboxymethyl cellulose, and the pH of step (c) is about 4.8.

7. Partially purified osteogenic factor prepared by the process of claim 1.

8. Partially purified osteogenic factor  
15 present in vertebrate bone characterized in that it:  
    (a) is nonfibrous;  
    (b) is unadsorbed by diethylaminoethyl cellulose anion exchanger at a pH of about 7.0;  
    (c) is adsorbed by carboxymethyl cellulose  
20 cation exchanger at a pH of about 4.8; and  
    (d) has a molecular weight below about 30,000 daltons.

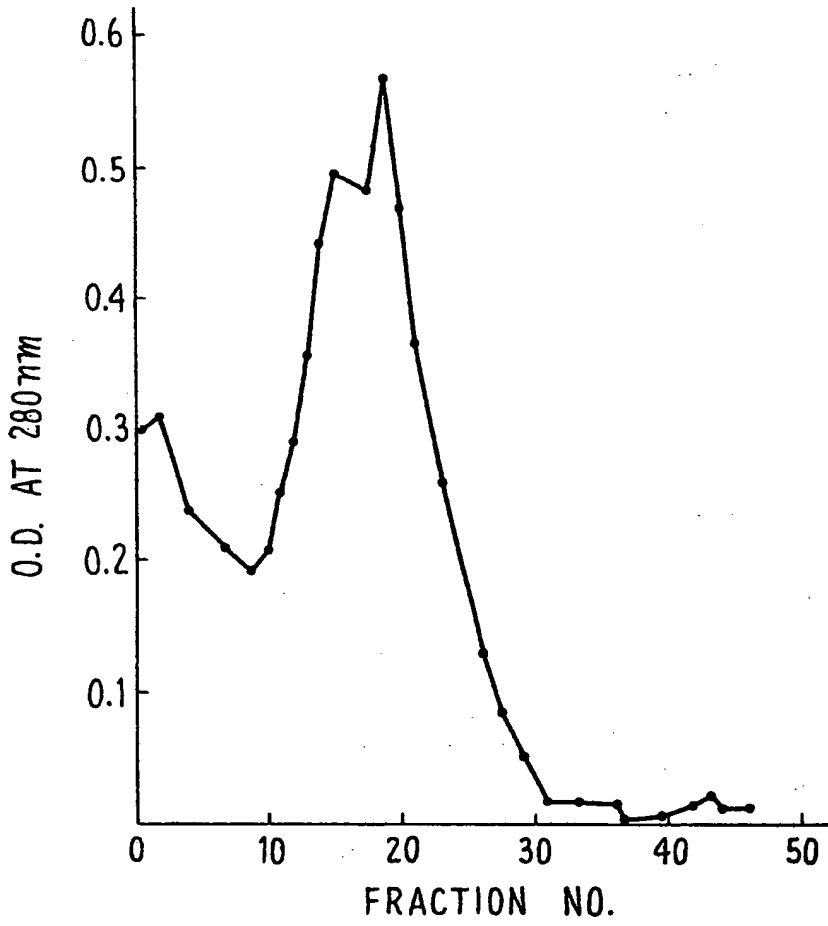


FIG. 1.



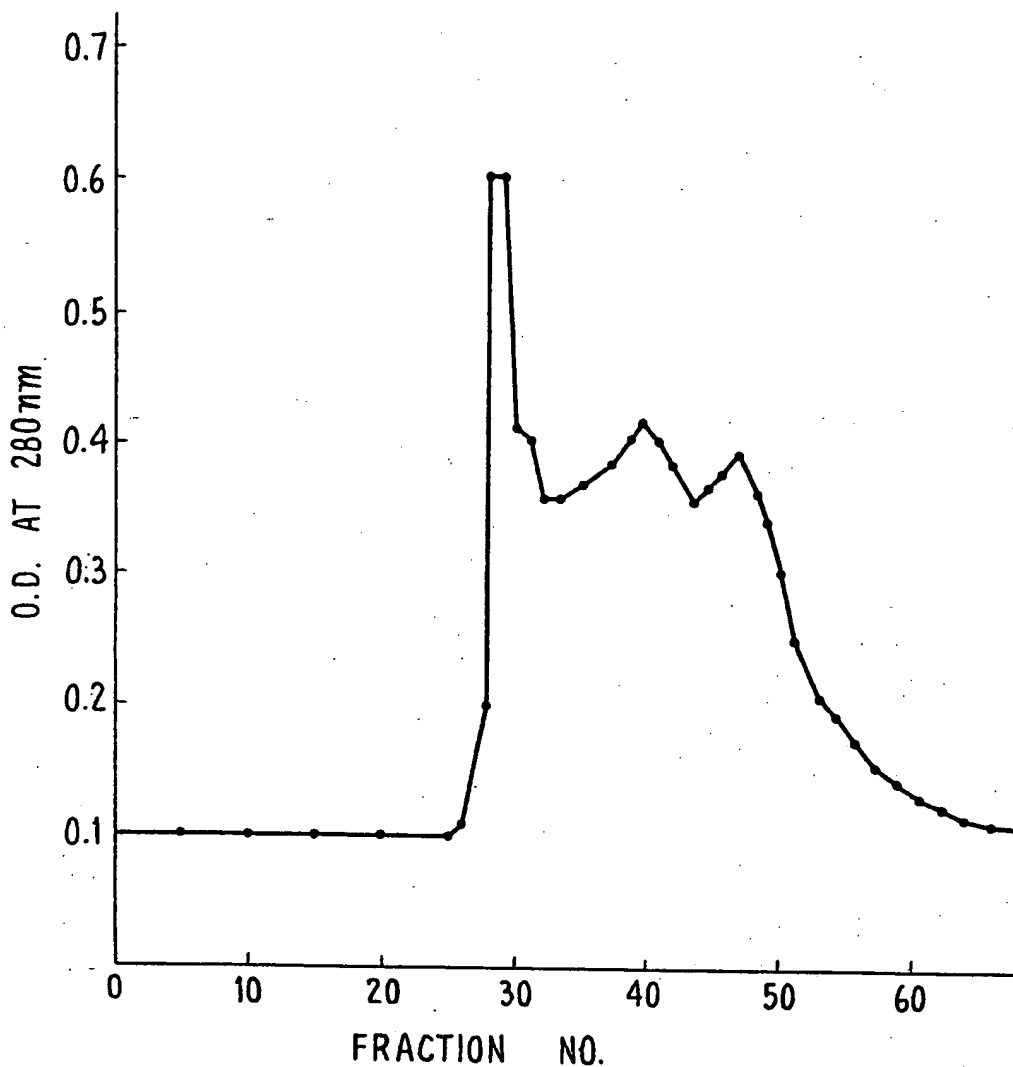


FIG . 2 .

**This Page is Inserted by IFW Indexing and Scanning  
Operations and is not part of the Official Record**

**BEST AVAILABLE IMAGES**

Defective images within this document are accurate representations of the original documents submitted by the applicant.

Defects in the images include but are not limited to the items checked:

- BLACK BORDERS
- IMAGE CUT OFF AT TOP, BOTTOM OR SIDES
- FADED TEXT OR DRAWING
- BLURRED OR ILLEGIBLE TEXT OR DRAWING
- SKEWED/SLANTED IMAGES
- COLOR OR BLACK AND WHITE PHOTOGRAPHS
- GRAY SCALE DOCUMENTS
- LINES OR MARKS ON ORIGINAL DOCUMENT
- REFERENCE(S) OR EXHIBIT(S) SUBMITTED ARE POOR QUALITY
- OTHER: \_\_\_\_\_

**IMAGES ARE BEST AVAILABLE COPY.**

**As rescanning these documents will not correct the image problems checked, please do not report these problems to the IFW Image Problem Mailbox.**